

# STATISTICS 2010

PIGMEAT



# Table of Content

## STRUCTURE OF PIG PRODUCERS AND PIG HERD IN DENMARK

Structure of Suppliers in Denmark	3
Structure of Pig Herd in Denmark	5

## PIG POPULATION AND PRODUCTION

Pig Population in Denmark	7
Development in the Pig Herd	8
Production of Pigs in Denmark	9
World Pigmeat Production and Pig Population in Selected Countries	10
EU's Supply Balance with Pigmeat	11
Supply Balance of Pigmeat in Selected Countries	11

## SLAUGHTERHOUSES

Supplies of Pigs for Slaughter in Denmark and Exports	13
Structure of Slaughterhouses	14
Pig Slaughtering in EU and Selected Countries	16
Employment and Wages	17

## PRODUCER PIG PRICES AND ECONOMY

Producer Pig Prices	19
Economy in Pig Production	20
Social Importance of the Pig Industry	21

## EXPORT AND IMPORT OF PIGMEAT

Denmark's Export of Pigmeat	23
Denmarks Export of Pigmeat for EU	26
Denmarks Export of Pigmeat for 3 <sup>rd</sup> countries	28
Trend in Pigmeat Export	30
Export of Live Pigs from Denmark	32
The Development in Rate of Exchange	33
Denmark's Import of Pigmeat	34
EU's Export to 3 <sup>rd</sup> Countries	35
USA and Japan's Trade in Pigmeat	36

## COMMON AGRICULTURAL POLICY AND EXPORT REFUNDS

Subsidies for private storing	39
Export Refunds	39

## CONSUMPTION AND PRICES

Consumer Prices of Pigmeat in Denmark	41
Sale of Fresh/Frozen Meat from Different Types of Shops	42
Consumption of Meat in the EU	43

# Structure of Pig Producers and Pig Herd in Denmark



## Structure of Suppliers in Denmark

### Slaughterpigs

1990 Number of pigs per supplier		Number of suppliers	% of all suppliers	Number of pigs	% of all pigs
1 -	200 head	19,159	58.1	1,075,058	7.1
201 -	500 head	5,443	16.5	1,742,298	11.5
501 -	1.000 head	3,703	11.2	2,632,078	17.4
1.001 -	2.000 head	2,983	9.0	4,090,409	27.1
2.001 -	3.000 head	993	3.0	2,392,294	15.9
3.001 -	4.000 head	366	1.1	1,249,525	8.3
4.001 -	5.000 head	158	0.5	707,041	4.7
5.001 -	10.000 head	159	0.5	1,042,487	6.9
10.001 -		12	0.0	156,297	1.0
<b>Total</b>		<b>32,976</b>	<b>100.0</b>	<b>15,087,487</b>	<b>100.0</b>

2000 Number of pigs per supplier		Number of suppliers	% of all suppliers	Number of pigs	% of all pigs
1 -	200 head	6,541	40.9	390,061	2.0
201 -	500 head	2,194	13.7	686,734	3.5
501 -	1.000 head	1,776	11.1	1,292,298	6.6
1.001 -	2.000 head	2,177	13.6	3,176,972	16.3
2.001 -	3.000 head	1,316	8.2	3,222,194	16.6
3.001 -	4.000 head	742	4.6	2,587,059	13.3
4.001 -	5.000 head	477	3.0	2,119,131	10.9
5.001 -	10.000 head	647	4.0	4,288,435	22.1
10.001 -		115	0.7	1,684,993	8.7
<b>Total</b>		<b>15,985</b>	<b>100.0</b>	<b>19,447,877</b>	<b>100.0</b>

2010 Number of pigs per supplier		Number of suppliers	% of all suppliers	Number of pigs	% of all pigs
1 -	200 head	705	15.6	51,202	0.3
201 -	500 head	419	9.3	138,711	0.8
501 -	1.000 head	372	8.2	270,812	1.6
1.001 -	2.000 head	624	13.8	925,899	5.4
2.001 -	3.000 head	452	10.0	1,120,008	6.6
3.001 -	4.000 head	398	8.8	1,385,945	8.1
4.001 -	5.000 head	304	6.7	1,354,956	7.9
5.001 -	10.000 head	861	19.1	6,043,958	35.4
10.001 -	20.000 head	329	7.3	4,396,658	25.8
20.001 -		52	1.2	1,384,518	8.1
<b>Total</b>		<b>4,516</b>	<b>100.0</b>	<b>17,072,667</b>	<b>100.0</b>

The statistical figures are based on reports from individual coop slaughterhouses for the calendar or the financial year.

## Structure of Pig Herd in Denmark

### Specialisation of the Pig Herd

	1990	2000	2010
Number of farms	79,338	54,541	42,099
Number of farms with pigs	29,903	13,231	5,068
Of which:			
With pigs and sows	13,902	6,110	2,089
With pigs only	8,010	4,876	2,239
With sows only	6,503	1,588	493

Source: Danmarks Statistik

Danmarks Statistik defines a slaughter pig as one of 50 kg and upwards. Farms with pigs less than 50 kg and without sows are accordingly not included in the above table. This is why the 3 categories for farms do not add up to the number of farms with pigs.

### Pigs and sows by size of herd

Pigs %	Number of farms		Number of pigs		Sows %	Number of farms		Number of sows	
	2009	2010	2009	2010		2009	2010	2009	2010
1 - 49	10.9	10.8	0.1	0.1	1 - 4	8.7	9.3	0.1	0.0
50 - 199	6.2	5.6	0.3	0.2	5 - 19	5.4	5.6	0.2	0.1
200 - 499	8.1	7.7	1.1	1.0	20 - 49	3.6	3.2	0.3	0.2
500 - 999	11.5	11.1	3.5	3.2	50 - 99	5.0	4.3	0.9	0.8
1.000 - 1.999	19.4	19.4	11.6	10.9	100 - 199	10.2	9.3	3.6	3.2
2.000 - 2.999	13.9	13.2	14.0	12.4	200 - 299	12.2	11.4	7.2	6.5
3.000 - 3.999	10.0	9.5	14.0	12.7	300 - 399	11.6	11.8	9.6	9.5
4.000 - 4.999	6.1	6.6	11.1	11.4	400 - 499	9.8	10.0	10.4	10.3
5.000 -	13.9	16.0	44.3	48.1	500 -	33.4	35.1	67.7	69.3
<b>Total</b>	<b>100</b>	<b>100</b>	<b>100</b>	<b>100</b>	<b>Total</b>	<b>100</b>	<b>100</b>	<b>100</b>	<b>100</b>



# Pig Population and Production



## Pig Population in Denmark

2010

1000 head	1 Jan.	1 April	1 July	1 Oct.
Gilts in pig	205	201	202	190
Other sows in pig	642	617	624	608
Total sows in pig	847	818	826	798
Boars	11	11	11	10
Sows with piglets	220	218	218	212
Dry sows	40	38	37	37
Cullud sows and boars for slaughter	9	8	7	6
Gilts (over 50 kg) for breeding	239	246	242	213
Piglets	2,475	2,460	2,514	2,463
Weaners < 50 kg	5,583	5,204	5,492	5,115
Slaughter pigs over 50 kg	3,449	3,205	3,181	3,179
<b>Total pig population</b>	<b>12,873</b>	<b>12,208</b>	<b>12,528</b>	<b>12,034</b>

*The census is based on a sample of about 3,500 farms.*

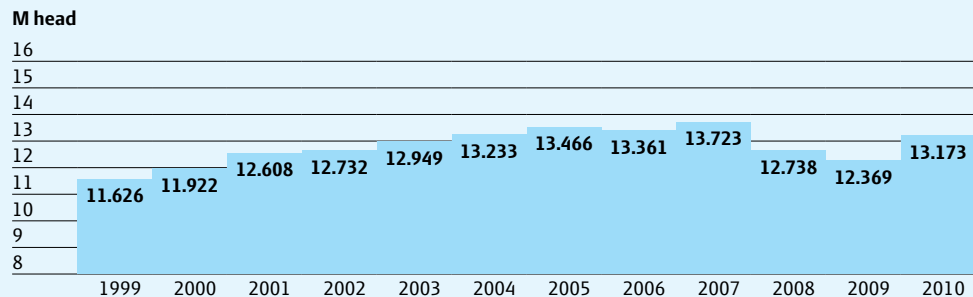
### Percentage distribution of pig population in counties (June census)

County	2009	2010
Copenhagen and Nordsjælland	0.4	0.3
Bornholm	1.7	2.0
Region Sjælland	11.0	10.4
Fyn	9.0	9.9
Syddjylland	20.1	20.1
Østjylland	15.2	15.8
Vestjylland	20.9	19.4
Nordjylland	21.7	22.1
<b>Total Denmark</b>	<b>100</b>	<b>100</b>

*Source: Danmarks Statistik*

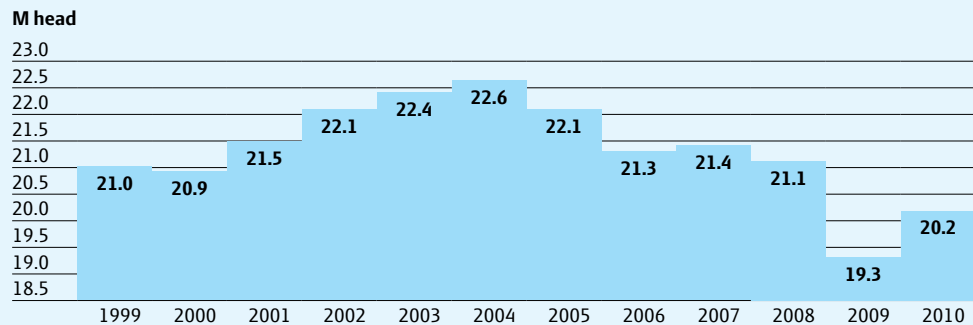
## Development in the Pig Herd

### Development in the pig herd



*Swinebestanden opgjort ved Danmarks Statistiks sommertælling.*

### Development in slaughterings



*The slaughtering includes slaughtering of pigs at the cooperative slaughterhouses, private slaughterhouses, public slaughterhouses and private butchers in Denmark.*

## Production of Pigs in Denmark

M head	2007	2008	2009	2010
Slaughtering in Denmark	21.4	21.1*	19.3	20.2
Export of slaughter pigs and sows	1.1	1.1	1.3	0.9
<b>Danish production of slaughter pigs and sows</b>	<b>22.5</b>	<b>22.2</b>	<b>20.6</b>	<b>21.1</b>
Export of piglets	3.9	5.3	7.0	7.5
<b>Total</b>	<b>26.4</b>	<b>27.5</b>	<b>27.6</b>	<b>28.6</b>

\* 53 weeks



## World Pigmeat Production and Pig Population in Selected Countries

	Pigmeat production 1,000 tonnes		Pig population M head	
	2009	2010 <sup>1)</sup>	2009	2010 <sup>1)</sup>
Germany	5,265	5,450	26.72	26.84
Spain	3,398	3,450	26.03	25.29
France	2,244	2,209	14.81	14.55
Poland	1,697	1,747	14.24	14.25
Italy	1,628	1,613	9.25	9.16
Denmark	1,575	1,625	12.20	12.87
Netherlands	1,280	1,288	11.74	12.11
Belgium/Luxembourg	1,096	1,132	6.21	6.23
UK	720	759	4.55	4.61
Austria	540	549	3.06	3.14
Hungary	453	605	3.38	3.25
Rumania	406	388	6.17	5.89
Portugal	396	391	2.34	2.33
Czech. Rep.	286	274	2.14	1.95
Sweden	266	272	1.70	1.62
Finland	207	197	1.04	1.35
Ireland	197	198	1.61	1.60
Greece	117	109	1.06	1.07
Bulgaria	73	67	0.78	0.73
Other EU-27 countries	18,492	18,776	124.95	124.71
<b>EU-27 total</b>	<b>22,153</b>	<b>22,585</b>	<b>152.78</b>	<b>152.25</b>
China (incl. Hong Kong)	48,905	50,000	462.90	470.00
USA	10,432	10,015	67.10	64.90
Brazil	3,190	3,220	39.40	39.50
Russia	2,205	2,350	19.60	20.20
Canada	1,945	1,906	12.20	11.80
Mexico	1,162	1,170	15.20	15.30
Japan	1,310	1,280	9.90	10.00
Rep. Of Korea	1,062	1,097	8.20	8.70
Ukraine	530	630	6.40	7.60
<b>Total selected countries</b>	<b>92,894</b>	<b>94,253</b>	<b>793,68</b>	<b>800,25</b>

<sup>1)</sup> Provisional figures Source: GIRA

## EU's Supply Balance with Pigmeat

	2009 EU-27	2010 <sup>1)</sup> EU-27	2011 <sup>2)</sup> EU-27
<b>1,000 tonnes (deadweight)</b>			
Production (GIP)	21,567	22,394	22,556
Import (cwe)	34	22	25
Export (cwe)	1,658	1,915	1,850
Stocks	0	0	0
Consumption	19,825	20,325	20,651
Self sufficiency, %	108.8	109.7	109.2

<sup>1)</sup> Provisional <sup>2)</sup> Forecast Source: Eurostat and GIRA

## Supply Balance of Pigmeat in Selected Countries

(Excl. stocks), 1,000 tonnes (CWE)

2008	Canada	USA	Mexico	China*	Brazil	Russia	Japan
Production	1,786	10,599	1,161	46,205	3,015	1,736	1,249
Import	194	377	535	709	0	1,053	1,267
Export	1,129	2,117	91	223	625	0	1
Consumption	848	8,806	1,605	46,691	2,390	2,789	2,486

2009	Canada	USA	Mexico	China*	Brazil	Russia	Japan
Production	1,789	10,442	1,162	48,905	3,130	1,844	1,310
Import	180	378	678	270	0	845	1,138
Export	1,123	1,857	70	232	707	1	1
Consumption	854	9,013	1,770	48,823	2,423	2,688	2,467

2010 <sup>1)</sup>	Canada	USA	Mexico	China*	Brazil	Russia	Japan
Production	1,772	10,187	1,165	51,070	3,195	1,920	1,291
Import	183	390	687	355	1	854	1,198
Export	1,159	1,917	78	278	619	1	1
Consumption	807	8,653	1,774	51,097	2,577	2,773	2,485

2011 <sup>2)</sup>	Canada	USA	Mexico	China*	Brazil	Russia	Japan
Production	1,745	10,259	1,195	52,500	3,275	1,910	1,285
Import	220	413	695	410	1	855	1,210
Export	1.18	2,121	85	330	630	1	0
Consumption	795	8,547	1,805	52,580	2,646	2,764	2,497

\* Excl. Hong Kong <sup>1)</sup> Provisional figures <sup>2)</sup> Forecast Source: USDA

## Supplies of Pigs for Slaughter in Denmark and Exports

	2010		2009		%-change 2010:09
	Head	%-share	Head	%-share	
Slaughter Denmark	20,243,421	70.7	19,288,591	69.9	5.0
Export:					
Slaughter pigs/sows	895,814	3.1	1,250,173	4.5	-28.3
Piglets	7,509,591	26.2	7,043,720	25.5	3.6
<b>Total</b>	<b>28,648,826</b>	<b>100</b>	<b>27,582,484</b>	<b>100</b>	<b>3.9</b>

### Slaughterings

2009	Slaughter pigs 50-110 kg	Sows more than 110 kg	Total
January	1,686,465	36,216	1,722,681
February	1,536,365	31,841	1,568,206
March	1,847,289	41,275	1,888,564
April	1,306,441	32,019	1,338,460
May	1,382,166	33,270	1,415,436
June	1,670,963	41,298	1,712,261
July	1,373,493	32,565	1,406,058
August	1,406,007	33,971	1,439,978
September	1,883,208	44,031	1,927,239
October	1,516,548	35,498	1,552,046
November	1,587,741	36,187	1,623,928
December	1,658,091	35,643	1,693,734
<b>Jan. - dec.</b>	<b>18,854,777</b>	<b>433,814</b>	<b>19,288,591</b>

2010	Slaughter pigs 50-110 kg	Sows more than 110 kg	Total
January	1,686,867	41,015	1,727,882
February	1,521,472	36,974	1,558,446
March	1,849,584	44,797	1,894,381
April	1,462,670	39,283	1,501,953
May	1,367,893	36,654	1,404,547
June	1,863,486	46,177	1,909,663
July	1,489,621	34,501	1,524,122
August	1,515,645	37,338	1,552,983
September	1,970,000	46,399	2,016,399
October	1,576,303	37,571	1,613,874
November	1,656,249	41,016	1,697,265
December	1,800,738	41,168	1,841,906
<b>Jan. - dec.</b>	<b>19,760,528</b>	<b>482,893</b>	<b>20,243,421</b>

Source: Reports to Production Levy

# Slaughterhouses



## Structure of Slaughterhouses

### Development in number of slaughterhouses

DS-members:	End year:				
	1970	1980	1990	2009	2010
Cooperatives	50	18	5	2	2
Private owned	4	2	1	0	0
<b>Total slaughterhouses</b>	<b>54</b>	<b>20</b>	<b>6</b>	<b>2</b>	<b>2</b>

### Not DS-members:

<b>Private*</b>			<b>7</b>	<b>10</b>	<b>8</b>
-----------------	--	--	----------	-----------	----------

\*Slaughterhouses with more than 10,000 pigs per year. No figures in 1970 and 1980 are available.



## Pig Slaughtering in EU and Selected Countries

<b>M head</b>	<b>2009</b>	<b>2010<sup>1)</sup></b>	<b>2011<sup>2)</sup></b>	<b>%-change 2011:2010</b>
Germany	56.42	58.40	59.50	1.9
Spain	40.39	40.08	40.20	0.3
France	25.28	24.88	24.60	-1.1
Poland	19.71	20.28	20.49	1.0
Denmark	19.31	19.81	19.59	-1.1
Netherlands	13.87	13.95	13.90	-0.4
Italy	13.80	13.67	13.54	-1.0
Belgium/Luxembourg	11.65	12.02	11.83	-1.6
UK	9.18	9.66	9.95	3.0
Rumania	4.94	4.71	4.78	1.5
Austria	5.63	5.73	5.75	0.3
Portugal	5.85	5.77	5.65	-2.1
Hungary	4.93	6.50	6.45	-0.8
Czech. Rep.	3.22	3.08	2.89	-6.2
Sweden	3.01	3.09	3.14	1.6
Ireland	2.49	2.50	2.52	0.8
Finland	2.32	2.21	2.17	-1.8
Greece	1.88	1.75	1.74	-0.6
Bulgaria	0.99	0.91	0.85	-6.6
Slovakia	1.07	0.49	0.46	-6.1
Lithuania	0.55	0.68	0.75	10.3
Cyprus	0.71	0.71	0.72	1.4
Estonia	0.50	0.54	0.58	7.4
Latvia	4.93	6.50	6.45	-0.8
Slovenia	0.29	0.28	0.28	0.0
Malta	0.10	0.08	0.07	-12.5
<b>EU-27</b>	<b>248.53</b>	<b>252.13</b>	<b>252.81</b>	<b>0.3</b>
Brazil	39.38	39.45	39.45	0.0
Canada	21.70	21.30	21.70	1.9
USA	113.60	109.70	110.10	0.4
Russia	39.90	43.20	45.00	4.2
Japan	16.96	16.60	16.70	0.6
China	645.27	657.90	676.00	2.8

<sup>1)</sup> Provisional <sup>2)</sup> Forecast Source: GIRA

The figures include slaughtering of pigs, i.e. imported pigs are included.

## Employment and Wages

### Number of Workers Employed in the Slaughterhouses

<b>Average per month</b>	<b>2006</b>	<b>2007</b>	<b>2008</b>	<b>2009</b>	<b>2010</b>
January	11,200	10,200	10,800	9,000	8,000
February	11,200	10,300	10,900	9,000	8,000
March	10,900	10,300	10,900	8,900	7,800
April	11,100	10,200	10,700	8,900	7,700
May	11,100	10,800	10,600	8,900	7,800
June	11,300	10,900	10,500	8,800	8,000
July	11,300	11,100	10,000	8,700	7,900
August	11,000	11,000	9,700	8,600	7,900
September	10,700	10,800	9,000	8,300	7,700
October	10,700	10,600	8,800	8,000	7,700
November	10,400	10,800	9,000	8,100	7,700
December	10,300	10,900	9,200	7,900	7,400
<b>Total year</b>	<b>10,900</b>	<b>10,700</b>	<b>10,000</b>	<b>8,600</b>	<b>7,800</b>

Source: Dansk Industri

### Average wages for Danish slaughterhouse workers

	<b>DKK/hour*</b>	<b>Index 1980=100</b>
2003	213.25	316
2004	217.66	322
2005	223.83	321
2006	227.29	336
2007	240.62	356
2008	251.03	371
2009	255.49	379
2010	256.19	380

\* Including holiday pay and sickness benefit. Source: Dansk Industri

### Earnings of employees. Annual percentage increase (Industry)

	<b>Denmark</b>	<b>Germany</b>	<b>Sweden</b>	<b>UK</b>	<b>Netherlands</b>	<b>USA</b>
2003	4.4	2.4	3.0	3.5	4.9	4.4
2004	3.4	2.0	2.7	3.7	4.2	4.8
2005	2.7	1.1	3.0	3.6	1.7	3.5
2006	3.0	0.8	3.0	5.1	3.2	1.8
2007	4.1	0.9	3.7	3.6	3.3	1.9
2008	4.2	2.9	3.9	2.9	4.3	2.3
2009	2.6	1.7	1.9	1.8	2.0	1.3
2010	2.6	2.1	3.2	4.5	2.1	2.4

Source: DA International lønstatistik

# Producer Pig Prices and Economy

## Producer Pig Prices

### Payment to the producer

DKK/kg	Average Pig Price*	Bonus payment	Value of payment to producer accounts	Production levy	Total
2008	9.31	0.45	0.10	(0.07)	9.79
2009	8.76	0.55	0.11	(0.05)	9.37
2010	9.07	0.80	0.11	(0.05)	9.93

\* After weight- and meatpercentage payment, and incl. discounts at transport.

### Producer pig prices

Producer pig prices DKK/kg, Danish Crown (best weight group)

Week	2008	2009	2010	Week	2008	2009	2010
1	8.10	9.00	8.00	27	10.10	9.80	10.20
2	8.10	8.80	8.00	28	10.10	10.00	10.00
3	8.10	8.80	8.00	29	10.10	9.80	9.80
4	8.10	8.60	8.00	30	10.30	9.80	9.80
5	8.10	8.40	8.20	31	10.30	9.80	10.00
6	8.10	8.40	8.40	32	10.50	9.60	10.00
7	8.10	8.20	8.60	33	10.50	9.60	9.80
8	8.30	8.20	8.60	34	10.70	9.60	9.80
9	8.50	8.20	8.60	35	10.70	9.60	9.80
10	8.70	8.20	8.60	36	10.70	9.60	9.60
11	8.90	8.20	8.60	37	10.90	9.60	9.60
12	8.90	8.20	8.60	38	10.90	9.60	9.40
13	8.90	8.40	8.80	39	10.70	9.40	9.20
14	9.10	8.60	8.80	40	10.50	9.20	9.20
15	9.30	8.80	8.80	41	10.50	9.00	9.20
16	9.30	9.00	8.80	42	10.30	8.80	9.20
17	9.10	9.00	9.00	43	10.30	8.60	9.20
18	9.30	9.20	9.20	44	10.10	8.60	9.20
19	9.30	9.20	9.50	45	9.80	8.40	9.20
20	9.50	9.20	9.70	46	9.60	8.60	9.20
21	9.70	9.20	9.90	47	9.40	8.60	9.20
22	9.70	9.40	10.20	48	9.40	8.80	9.20
23	9.90	9.60	10.20	49	9.40	8.80	9.20
24	10.10	9.60	10.40	50	9.20	8.80	9.20
25	10.10	9.60	10.40	51	9.20	8.40	9.20
26	10.10	9.80	10.40	52	9.00	8.00	9.20
				53		8.00	
<b>Avg.</b>	<b>9.55</b>	<b>8.98</b>	<b>9.25</b>				



## Economy in Pig Production

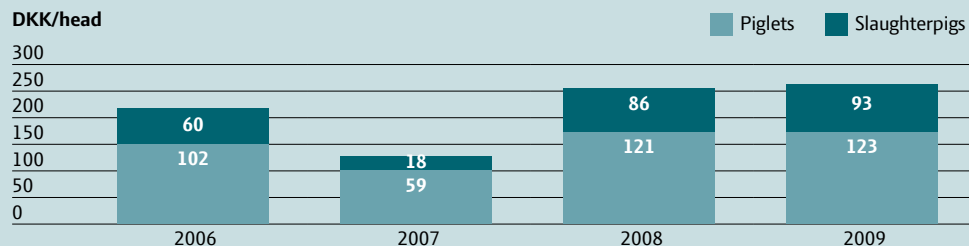
### The ratio between the price for slaughter pigs and compound feeding stuff

Monthly ratio	2007	2008	2009	2010
January	6.79	3.97	4.68	5.72
February	6.77	3.84	4.77	5.68
March	6.55	4.18	4.84	6.21
April	6.38	4.32	5.27	6.61
May	6.64	4.46	5.76	6.96
June	6.60	4.75	6.06	7.71
July	6.66	4.81	6.22	7.14
August	6.61	5.13	6.23	6.55
September	4.95	5.47	6.55	5.68
October	4.49	5.32	6.18	5.42
November	4.26	4.93	6.14	5.33
December	4.18	4.80	6.04	5.30
<b>Total year</b>	<b>5.91</b>	<b>4.67</b>	<b>5.73</b>	<b>6.19</b>

The price of slaughter pigs = Danmarks Statistik price for slaughter pigs (excl. bonus).

The price of compound feeding stuff = Danmarks Statistik's prices for compound feeding stuff.

### Gross margin 2007-2010



Source: Videncenter for Svineproduktion.

## Social Importance of the Pig Industry

### The total Danish pig production

Year	Tonnes	%-change from the year before	Value ab producer DKK M	%-change from the year before
2008	1,985,000	-3.0	19,142	+6.0
2009	1,898,000	-4.4	18,025	-5.8
2010	1,974,000	+4.0	19,270	+6.9

The production includes approved and discarded animals, slaughtered on the farms, exports of live animals and edible by-products.

### Value of the Danish export

Year	Total export		Agricultural export		Animal agricultural export	
	DKK M	%-change from the year before	DKK M	%-change from the year before	DKK M	%-change from the year before
2008	587,602	6.6	63,330	6.7	48,253	9.4
2009	495,577	-15.7	59,460	-6.1	45,250	-6.2
2010	544,125	9.8	66,405	11.7	48,523	7.2

### Export of pigmeat products

Year	Value DKK M	% -change from the year before	Share of pork export, percentage		
			Total export	Agricultural export	Animal agricultural export
2008	28,910	6.2	4.9	45.6	59.9
2009	26,637	-7.9	5.4	44.8	58.9
2010	28,169	3.3	5.1	42.4	58.1

All values include payments from the FEOPA.

Source: Danmarks Statistik

# Export and Import of Pigmeat



## Denmark's Export of Pigmeat

2010

Country	Tonnes	DKK M	Country	Tonnes	DKK M
Germany	624,283	7,109	Croatia	3,253	46
UK	284,001	4,704	Cyprus	3,130	50
Poland	188,669	2,180	Hungary	3,020	49
Japan	139,355	3,603	Norway	2,819	92
China	134,398	852	Greenland	2,698	94
Italy	122,348	1,749	Argentina	2,680	28
Russia	104,667	1,335	New Zealand	2,223	44
Australia	49,020	951	Canada	1,828	46
Sweden	44,968	1,062	United Arab Emirates	1,764	22
Hong Kong	37,379	347	Uruguay	1,751	13
USA	36,983	879	Slovakia	1,669	42
Netherlands	27,594	202	Algeria	1,519	30
France	18,114	360	Malaysia	1,497	18
Czech Republic	16,130	229	Thailand	1,453	11
Rumania	12,789	140	Faro Islands	1,421	44
Korea	12,569	126	Mexico	1,099	13
Ireland	11,157	211	Guam	1,099	20
Belgium, Luxembourg	8,943	115	Papua New Guinea	1,064	29
Lithuania	7,961	87	Austria	1,008	15
Greece	7,545	134	Bahamas	956	15
Singapore	7,367	102	Vietnam	907	9
Ukraine	6,732	25	Aserbadjan	893	8
Portugal	6,723	161	Serbia	820	11
Bulgaria	5,584	46	New Caledonia	685	17
Estonia	5,554	77	Saudi Arabia	559	10
Spain	5,309	139	Malta	527	14
Finland	4,821	127	Melilla	521	9
Taiwan	4,215	81	Other Countries	11,280	193
Latvia	3,909	42	<b>Total</b>	<b>1,993,228</b>	<b>28,169</b>

## Denmark's Export of Pigmeat (Tonnes)

2009

Tonnes	EU-27	3 <sup>rd</sup> countries	Total
Live pigs and sows	318,180	1,794	319,975
Bacon	99,145	1,205	100,350
Carcasses pigs/sows	76,633	230	76,864
Cuts	727,434	328,884	1,056,318
By-products	100,710	163,472	264,182
Canned meat	42,642	14,374	57,016
Other processed products	19,073	14,153	33,226
<b>Total</b>	<b>1,383,817</b>	<b>524,113</b>	<b>1,907,929</b>
%-share	72.5	27.5	100

2010

Tonnes	EU-27	3 <sup>rd</sup> countries	Total
Live pigs and sows	312,565	860	313,425
Bacon	97,773	1,304	99,077
Carcasses pigs/sows	75,610	541	76,151
Cuts	774,807	350,084	1,124,892
By-products	93,194	192,705	285,898
Canned meat	43,746	17,069	60,815
Other processed products	18,166	14,804	32,970
<b>Total</b>	<b>1,415,862</b>	<b>577,366</b>	<b>1,993,228</b>
%-share	71.0	29.0	100

## Denmark's Export of Pigmeat (1,000 DKK)

2009

1,000 DKK	EU-27	3 <sup>rd</sup> countries	Total
Live pigs and sows	4,082,213	62,414	4,144,627
Bacon	1,964,056	40,552	2,004,608
Carcasses pigs/sows	812,802	4,176	816,978
Cuts	9,830,863	6,478,708	16,309,571
By-products	819,147	1,094,051	1,913,198
Canned meat	935,350	380,282	1,315,632
Other processed products	479,427	297,943	777,371
<b>Total</b>	<b>18,923,858</b>	<b>8,358,125</b>	<b>27,281,984</b>
%-share	69.4	30.6	100

*Excl. payments from FEOGA: 10 DKK M*

2010

1,000 DKK	EU-27	3 <sup>rd</sup> countries	Total
Live pigs and sows	3,997,257	55,561	4,052,819
Bacon	1,869,272	44,211	1,913,483
Carcasses pigs/sows	734,588	8,682	743,270
Cuts	10,228,413	6,947,833	17,176,247
By-products	829,911	1,302,969	2,132,880
Canned meat	939,129	445,089	1,384,218
Other processed products	451,689	314,642	766,332
<b>Total</b>	<b>19,050,259</b>	<b>9,118,989</b>	<b>28,169,249</b>
%-share	67.6	32.4	100

*Excl. payments from FEOGA: 4.8 DKK M*

## Denmarks Export of Pigmeat for EU (Tonnes)

2009

Tonnes	Germany	UK	Poland	Italy	Other EU-countries	Total EU-27
Live pigs and sows	271,190	127	17,534	9,649	19,680	318,180
Bacon	643	91,781	241	2,082	4,398	99,145
Carcasses pigs/sows	65,246	-	10,636	4	747	76,633
Cuts	227,978	151,470	148,744	94,920	104,322	727,434
By-products	26,226	16,840	5,558	4,324	47,762	100,710
Canned meat	16,097	15,399	42	980	10,123	42,642
Other processed products	904	7,109	8	115	10,937	19,073
<b>Total</b>	<b>608,285</b>	<b>282,726</b>	<b>182,763</b>	<b>112,075</b>	<b>197,969</b>	<b>1,383,817</b>
%-share	44.0	20.4	13.2	8.1	14.3	100

2010

Tonnes	Germany	UK	Poland	Italy	Other EU-countries	Total EU-27
Live pigs and sows	254,675	83	24,048	10,189	23,570	312,565
Bacon	518	92,973	55	28	4,199	97,773
Carcasses pigs/sows	70,397	-	4,587	-	626	75,610
Cuts	260,236	147,199	154,911	107,457	105,003	774,807
By-products	23,347	17,321	4,889	3,632	44,005	93,194
Canned meat	14,183	19,468	71	887	9,203	43,746
Other processed products	927	6,956	107	155	10,022	18,166
<b>Total</b>	<b>624,283</b>	<b>284,001</b>	<b>188,669</b>	<b>122,348</b>	<b>196,562</b>	<b>1,415,862</b>
%-share	44.1	20.1	13.3	8.6	13.9	100

## Denmark's Export of Pigmeat for EU (1,000 DKK)

2009

1,000 DKK	Germany	UK	Poland	Italy	Other EU-countries	Total EU-27
Live pigs and sows	3,370,701	7,695	223,008	183,215	297,593	4,082,213
Bacon	20,830	1,770,779	4,958	51,470	116,018	1,964,056
Carcasses pigs/sows	679,645	-	123,609	64	9,483	812,802
Cuts	2,572,467	2,298,645	1,771,295	1,270,164	1,918,292	9,830,863
By-products	191,669	118,214	43,096	77,780	388,388	819,147
Canned meat	308,171	346,585	1,050	16,933	262,611	935,350
Other processed products	22,429	180,889	201	2,592	273,316	479,427
<b>Total</b>	<b>7,165,914</b>	<b>4,722,808</b>	<b>2,167,218</b>	<b>1,602,217</b>	<b>3,265,701</b>	<b>18,923,858</b>
%-share	37.9	25.0	11.5	8.5	17.3	100

2010

1,000 DKK	Germany	UK	Poland	Italy	Other EU-countries	Total EU-27
Live pigs and sows	3,154,437	6,269	297,305	187,489	351,757	3,997,257
Bacon	17,146	1,746,207	1,836	1,041	103,041	1,869,272
Carcasses pigs/sows	673,820	-	51,770	-	8,998	734,588
Cuts	2,797,723	2,223,384	1,781,214	1,468,844	1,957,247	10,228,413
By-products	187,877	125,700	43,888	72,966	399,479	829,911
Canned meat	255,975	428,575	1,521	15,234	237,824	939,129
Other processed products	21,877	174,257	2,753	3,515	249,288	451,689
<b>Total</b>	<b>7,108,854</b>	<b>4,704,392</b>	<b>2,180,288</b>	<b>1,749,090</b>	<b>3,307,635</b>	<b>19,050,259</b>
%-share	37.3	24.7	11.4	9.2	17.4	100

Denmarks Export of Pigmeat for 3<sup>rd</sup> Countries (Tonnes)

2009

Tonnes	China Hong Kong	Japan	Russia	Other 3 <sup>rd</sup> countries	Total 3 <sup>rd</sup> countries
Live pigs and sows	15	1	1,146	342	1,504
Bacon	25		73	1,099	1,197
Carcasses pigs/sows		1	211	17	229
Cuts	18,851	125,280	80,204	101,996	326,331
By-products	136,948	134	14,070	13,634	164,786
Canned meat	323	3,201	751	11,046	15,321
Other processed products	347	1,229	352	11,102	13,030
<b>Total</b>	<b>156,508</b>	<b>129,845</b>	<b>96,807</b>	<b>139,238</b>	<b>522,398</b>
%-share	30.0	24.9	18.5	26.7	100

2010

Tons	China Hong Kong	Japan	Russia	Other 3 <sup>rd</sup> countries	Total 3 <sup>rd</sup> countries
Live pigs and sows	133	2	519	206	860
Bacon	15	174	81	1,034	1,304
Carcasses pigs/sows	8	49	51	433	541
Cuts	15,226	134,548	88,847	111,463	350,084
By-products	155,639	33	13,831	23,202	192,705
Canned meat	373	3,195	737	12,764	17,069
Other processed products	383	1,355	600	12,466	14,804
<b>Total</b>	<b>171,777</b>	<b>139,355</b>	<b>104,667</b>	<b>161,568</b>	<b>577,366</b>
%-share	29.8	24.1	18.1	28.0	100

Denmarks Export of Pigmeat for 3<sup>rd</sup> Countries (1,000 DKK)

2009

1,000 DKK	China Hong Kong	Japan	Russia	Other 3 <sup>rd</sup> countries	Total 3 <sup>rd</sup> countries
Live pigs and sows	1,991	583	38,495	10,937	52,006
Bacon	860	25	4,698	34,674	40,257
Carcasses pigs/sows			3,922	218	4,140
Cuts	110,963	3,273,775	1,105,623	1,960,745	6,451,106
By-products	839,568	3,940	106,856	151,363	1,101,727
Canned meat	8,423	89,472	15,358	291,725	404,978
Other processed products	9,086	36,509	10,211	213,594	269,400
<b>Total</b>	<b>970,891</b>	<b>3,404,303</b>	<b>1,285,163</b>	<b>2,663,258</b>	<b>8,323,615</b>
%-share	11.7	40.9	15.4	32.0	100

2010

1,000 DKK	China Hong Kong	Japan	Russia	Other 3 <sup>rd</sup> countries	Total 3 <sup>rd</sup> countries
Live pigs and sows	19,743	1,236	18,480	16,102	55,561
Bacon	475	6,832	5,155	31,750	44,211
Carcasses pigs/sows	114	1,510	835	6,224	8,682
Cuts	172,442	3,468,291	1,170,284	2,136,816	6,947,833
By-products	988,852	442	111,953	201,722	1,302,969
Canned meat	10,042	86,508	14,112	334,427	445,089
Other processed products	7,349	38,198	14,496	254,600	314,642
<b>Total</b>	<b>1,199,017</b>	<b>3,603,017</b>	<b>1,335,314</b>	<b>2,981,641</b>	<b>9,118,989</b>
%-share	13.1	39.5	14.6	32.7	100

## Trend in Pigmeat Export

### Products

Tonnes	1990	2000	2009	2010
Live pigs and sows	1,671	68,795	319,975	313,425
Bacon	119,524	99,701	100,350	99,077
Carcasses pigs/sows	9,499	49,497	76,864	76,151
Cuts	478,926	932,994	1,056,318	1,124,892
By-products	99,996	178,008	264,182	285,898
Canned meat	152,696	94,948	57,016	60,815
Other processed products	34,648	48,350	33,226	32,970
<b>Total</b>	<b>896,961</b>	<b>1,472,293</b>	<b>1,907,929</b>	<b>1,993,228</b>

1,000 DKK	1990	2000	2009	2010
Live pigs and sows	21,938	812,572	4,144,627	4,052,819
Bacon	2,707,116	2,256,015	2,004,608	1,913,483
Carcasses pigs/sows	119,346	494,214	816,978	743,270
Cuts	9,953,210	16,429,724	16,309,571	17,176,247
By-products	710,203	1,009,594	1,913,198	2,132,880
Canned meat	3,431,511	2,069,713	1,315,632	1,384,218
Other processed products	638,295	985,825	777,371	766,332
<b>Total</b>	<b>17,581,620</b>	<b>24,057,659</b>	<b>27,281,984</b>	<b>28,169,249</b>

## Trend in Pigmeat Export

### Main countries

Tonnes	1990	2000	2009	2010
Germany	133,390	293,853	608,285	624,283
UK	241,285	256,437	282,726	284,001
Poland	n.a.	24,023	182,763	188,669
Italy	75,257	111,670	112,075	122,348
France	107,053	76,948	18,138	18,114
Other EU-countries	33,742	114,019	179,831	178,448
<b>Total EU</b>	<b>590,727</b>	<b>876,950</b>	<b>1,383,817</b>	<b>1,415,862</b>
China/Hong Kong	n.a.	45,634	156,508	171,777
Japan	115,144	218,205	129,845	139,355
Russia	n.a.	115,319	96,892	104,667
USA	95,627	63,117	36,042	36,983
Other countries	95,463	153,068	1,488,643	124,585
<b>Total 3<sup>rd</sup> countries</b>	<b>306,234</b>	<b>595,343</b>	<b>1,907,929</b>	<b>577,366</b>
<b>Total</b>	<b>896,961</b>	<b>1,472,293</b>	<b>3,291,746</b>	<b>1,993,228</b>

1,000 DKK	1990	2000	2009	2010
Germany	2,461,681	4,078,016	7,165,914	7,108,854
UK	4,550,369	4,455,623	4,722,808	4,704,392
Poland	n.a.	260,141	2,167,218	2,180,288
Italy	1,336,370	1,552,875	1,602,217	1,749,090
France	2,011,135	1,137,703	361,635	359,757
Other EU-countries	526,424	1,936,763	2,904,066	2,947,877
<b>Total EU</b>	<b>10,885,979</b>	<b>13,421,121</b>	<b>18,923,858</b>	<b>19,050,259</b>
China/Hong Kong	n.a.	257,806	970,892	1,199,017
Japan	3,255,676	5,745,241	3,404,303	3,603,017
Russia	n.a.	933,243	1,286,769	1,335,314
USA	1,891,708	1,610,905	821,443	879,032
Other countries	1,548,257	3,280,392	1,874,718	2,102,609
<b>Total 3<sup>rd</sup> countries</b>	<b>6,695,641</b>	<b>10,636,538</b>	<b>8,358,125</b>	<b>9,118,989</b>
<b>Total</b>	<b>17,581,620</b>	<b>24,057,659</b>	<b>27,281,984</b>	<b>28,169,249</b>

## Export of Live Pigs from Denmark

Head	Piglets		Slaughter pigs	Sows	Total
	0-15 kg.	15-50 kg			
January	32,886	531,476	114,233	14,670	693,265
February	32,181	456,198	92,693	13,127	594,199
March	30,960	594,198	94,979	14,788	734,925
April	39,280	603,553	99,626	11,820	754,279
May	31,384	560,625	84,895	13,781	690,685
June	32,889	578,472	96,638	14,660	722,659
July	34,788	552,877	97,846	12,200	697,711
August	32,794	528,791	91,207	10,480	663,272
September	32,770	572,231	89,221	8,388	702,610
October	34,992	533,174	71,412	9,141	648,719
November	24,110	557,967	85,838	9,494	677,409
December	42,201	572,923	88,729	10,307	714,160
<b>Jan. - Dec.</b>	<b>401,235</b>	<b>6,642,485</b>	<b>1,107,317</b>	<b>142,856</b>	<b>8,293,893</b>

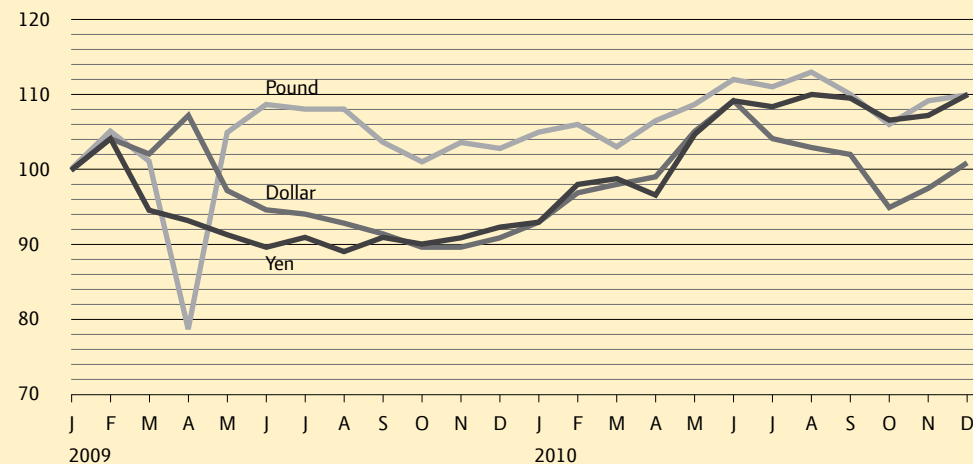
Head	Piglets		Slaughter pigs	Sows	Total
	0-15 kg.	15-50 kg			
January	36,494	564,680	100,981	10,685	712,840
February	28,763	540,337	82,610	10,856	662,566
March	35,165	596,857	110,574	6,929	749,525
April	34,617	595,094	78,137	9,023	716,871
May	31,416	649,489	65,818	10,553	757,276
June	34,987	622,364	60,840	11,056	729,247
July	38,570	554,633	50,167	9,074	652,444
August	36,362	618,294	38,426	15,446	708,528
September	36,830	561,394	35,804	12,034	646,062
October	39,318	577,546	40,929	10,636	668,429
November	33,603	559,246	52,520	5,048	650,417
December	49,889	633,643	57,303	10,365	751,200
<b>Jan. - Dec.</b>	<b>436,014</b>	<b>7,073,577</b>	<b>774,109</b>	<b>121,705</b>	<b>8,405,405</b>

Source: Report to Production Levy

## The Development in Rate of Exchange

DKK per 100 units	Pound		Dollar		Yen	
	2009	2010	2009	2010	2009	2010
January	800.49	842.99	560.04	521.55	6.16	5.71
February	840.99	849.77	582.03	543.99	6.32	6.03
March	810.61	825.42	572.13	548.49	5.82	6.05
April	633.37	851.40	598.10	555.17	5.76	5.94
May	842.79	868.22	545.61	591.90	5.64	6.42
June	869.54	899.03	530.35	609.55	5.50	6.71
July	863.60	891.83	527.54	583.72	5.59	6.67
August	866.32	904.51	522.66	577.90	5.49	6.77
September	834.93	886.92	511.78	570.26	5.59	6.76
October	807.89	850.91	501.02	536.57	5.55	6.56
November	829.96	871.93	500.56	545.99	5.59	6.62
December	825.33	879.27	509.19	563.81	5.68	6.76

Index  
January 2009 = 100



## Denmark's Import of Pigmeat

2009

Tonnes	Germany	Sweden	Other EU-27	Other countries	Total
Live pigs and sows	68	-	-	-	68
Bacon	8,963	701	1,714	7	11,385
Carcasses pigs/sows	1	25	-	-	27
Cuts	33,023	1,228	5,522	1,008	40,781
By-products	36,417	4,678	18,709	5,757	65,561
Canned meat	13,182	888	19,849	5	33,924
Other processed products	15,530	1,573	15,134	127	32,363
<b>Total Fresh/frozen and bacon</b>	<b>107,185</b>	<b>9,094</b>	<b>60,928</b>	<b>6,903</b>	<b>184,110</b>
%-share	58.2	4.9	33.1	3.7	100

2010

Tonnes	Germany	Sweden	Other EU-27	Other countries	Total
Live pigs and sows	29	1	1	-	32
Bacon	7,725	463	1,564	3	9,755
Carcasses pigs/sows	3	1	1	20	25
Cuts	38,296	1,039	10,099	1,232	50,666
By-products	34,227	5,614	22,513	6,272	68,625
Canned meat	11,690	1,228	11,216	18	24,152
Other processed products	14,513	1,916	6,611	89	23,129
<b>Total Fresh/frozen and bacon</b>	<b>106,483</b>	<b>10,262</b>	<b>52,004</b>	<b>7,634</b>	<b>176,384</b>
%-share	60.4	5.8	29.5	4.3	100

## EU's Export to 3<sup>rd</sup> Countries

Products

Tonnes (product weight)	2008 EU-27	2009 EU-27	2010 EU-27
Live pigs	95,322	151,401	96,868
Fresh/frozen pigmeat	1,172,239	950,303	1,163,192
Bacon	26,819	26,291	30,552
Other processed products	101,741	101,855	105,573
Canned meat	65,561	54,341	60,251
By-products	1,107,405	1,101,984	1,228,883
<b>Total</b>	<b>2,569,087</b>	<b>2,386,175</b>	<b>2,685,319</b>

Source: EUROSTAT, Luxembourg.

Main countries

Tonnes	Export countries		Import countries	
	2009 EU-27	2010 EU-27	2009 EU-27	2010 EU-27
Denmark	509,600	563,743	Russia	762,124
Germany	574,933	668,817	Hong Kong	413,921
France	192,392	225,862	Japan	186,049
Netherlands	218,417	223,293	China	178,671
Poland	183,204	222,722	Korea	95,036
Spain	183,120	213,241	Croatia	70,715
Belgium	119,239	109,127	USA	55,522
Italy	67,744	79,347	Australia	46,731
Austria	56,176	63,794	Angola	45,383
Lithuania	51,438	36,254	Philippines	26,573
Hungary	45,145	65,766	Ivory Coast	17,416
Portugal	37,695	38,455	Others	488,035
UK	34,396	39,685		
Finland	34,031	23,880		
Others	78,645	111,333		
<b>Total</b>	<b>2,386,175</b>	<b>2,685,319</b>	<b>Total</b>	<b>2,386,175</b>

Source: EUROSTAT, Luxembourg.

## USA and Japan's Trade in Pigmeat

### USA's import

Tonnes	Fresh/frozen	Processed products	Total 2010	Total 2009
Canada	267,401	37,570	304,971	296,186
Denmark	31,515	1,788	33,303	34,528
Other countries	14,745	14,302	29,047	25,978
<b>I alt</b>	<b>313,661</b>	<b>53,660</b>	<b>367,321</b>	<b>356,692</b>

### USA's export

Tonnes	Fresh/frozen	Processed products	Total 2010	Total 2009
Japan	391,042	12,195	403,231	400,456
Mexico	283,109	101,015	384,124	331,704
Canada	112,632	50,325	162,957	154,145
China incl. Hong Kong	106,546	6,287	112,833	113,161
Korea	69,494	3,529	73,023	88,545
Russia	53,739	965	54,704	100,810
Taiwan	21,092	275	21,367	27,397
Other countries	202,052	22,774	224,826	181,655
<b>Total</b>	<b>1,239,706</b>	<b>197,365</b>	<b>1,437,071</b>	<b>1,397,873</b>

The above-mentioned figures are excl. offal and by-products

Source: USDA, Washington

### Japan's import Fresh/frozen pigmeat

Tonnes	2007	2008	2009	2010
USA	270,616	336,973	288,664	298,347
Canada	165,529	174,632	172,334	178,648
Denmark	161,356	159,784	122,923	133,586
Other countries	162,782	146,228	118,963	142,436
<b>Total</b>	<b>760,283</b>	<b>817,617</b>	<b>702,884</b>	<b>753,017</b>

Source: Ministry of Agriculture, Japan



# Common Agricultural Policy and Export Refunds



## Common Agricultural Policy and Export Refunds

### Subsidies for private storing

Year	Period
2000	None
2001	None
2002	9/12 - 31/12
2003	1/1 - 6/2
2004	1/1 - 22/1
2005	None
2006	None
2007	29/10 - 27/11
2008	None
2009	None
2010	None

### Export refunds

#### Fresh, chilled and frozen cuts

Export refunds 2009 DKK/kg	Hams, shoulders/ fore ends and loins with bones	Bellies with rind	Deboned hams, shoulders/fore ends and loins excl. Japan products	Bellies without rind and bone excl. Japan products
<b>General</b>	<b>0</b>	<b>0</b>	<b>0</b>	<b>0</b>

#### Processed products

Export refunds 2009 DKK/kg	Dried sausages	Cooked sausages	Cooked hams*	Cooked shoulders	Luncheon meat
<b>General: Total year</b>	<b>1.45</b>	<b>1.13</b>	<b>2.16/1.27</b>	<b>1.70/1.27</b>	<b>0</b>

\* o/u 1 kg

## Consumer Prices of Pigmeat in Denmark

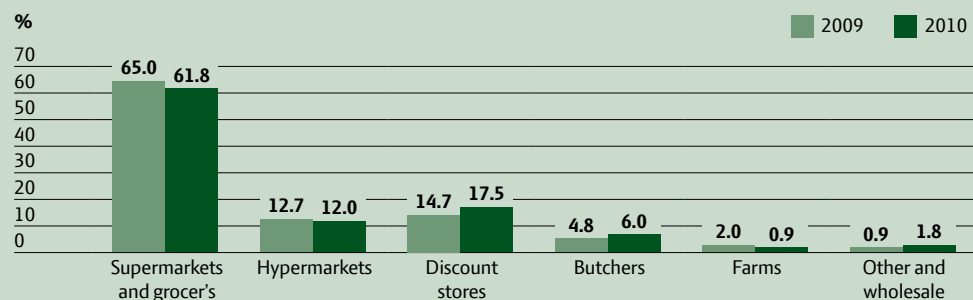
# Consumption and Prices

DKK/kg	Tenderloin	Cuts from loin	Bellies	Cuts from ham	Minced pigmeat
1. Quarter	66.30	43.36	40.96	60.00	37.68
2. Quarter	66.60	51.07	46.66	60.58	40.32
3. Quarter	69.32	48.05	45.61	62.35	40.70
4. Quarter	73.03	42.82	40.81	60.37	39.54
<b>Total year 2010</b>	<b>68.56</b>	<b>45.82</b>	<b>43.81</b>	<b>60.83</b>	<b>39.45</b>
Total year 2009	70.62	46.70	42.73	63.43	39.85

Source: GfK Denmark A/S, ConsumerScan



## Sale of Fresh/frozen Meat from Different Types of Shops



Source: GfK Denmark A/S, ConsumerScan

## Consumption of Meat in the EU

Kg per capita	2000			2010		
	Pigmeat	Beef	Poultry	Pigmeat	Beef	Poultry*
Germany	54,2	14,0	16,0	54,0	12,7	18,8
France	36,0	25,7	24,9	33,6	25,8	24,3
Italy	37,2	25,0	18,7	38,3	22,5	18,6
Netherlands	43,6	19,4	21,6	41,7	17,1	23,0
UK	24,1	17,7	29,3	24,5	19,1	35,8
Belgium/Lux.	47,5	19,9	18,6	40,8	17,5	19,3
Ireland	39,5	15,5	35,2	33,5	19,0	26,6
Denmark	64,4	23,6	19,2	50,8	25,1	20,9
Greece	31,6	19,1	20,1	26,7	15,8	19,7
Spain	64,8	14,4	25,7	53,2	12,1	24,1
Portugal	41,6	18,0	30,3	45,6	16,5	35,8
Austria	61,1	19,9	17,4	56,9	17,0	21,2
Sweden	35,4	22,4	12,5	36,0	25,1	14,7
Finland	32,8	19,1	13,3	34,3	18,3	19,0
<b>Total EU-15</b>	<b>42,9</b>	<b>19,3</b>	<b>21,8</b>	<b>40,8</b>	<b>18,4</b>	<b>22,7</b>
<b>Total EU-27</b>	<b>40,7</b>	<b>n.a.</b>	<b>20,6</b>	<b>40,8</b>	<b>16,1</b>	<b>22,8</b>

\* 2009 Source: GIRA

The official figures for meat available for consumption shows the statistics calculated quantity available in the market. However, the real consumption of pigmeat in Denmark differs substantially from the statistical quantity available. Different official surveys prove that the real consumption is half the quantity shown in official supply statistics.





**Agriculture & Food**

Axelborg, Axeltorv 3  
DK-1609 København V

T +45 3339 4000  
F +45 3339 4141

E [info@lf.dk](mailto:info@lf.dk)  
W [www.lf.dk](http://www.lf.dk)